



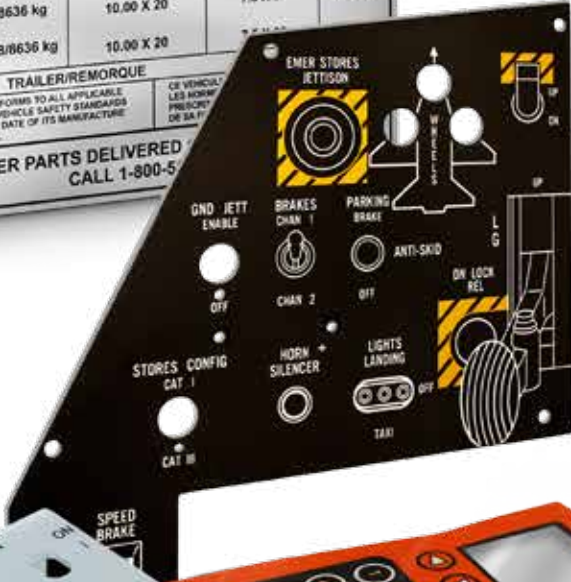
Metalphoto of Cincinnati

Durable Nameplates, Panels, Overlays, Labels & Signs

*Have an identification problem?
We have a solution!*

Solutions for:

- UV/sunlight exposure
- abrasion
- extreme temperatures
- weather
- saltwater
- chemicals & solvents
- cleaning processes
- graffiti





Metalphoto of Cincinnati

Experience is our Strength.

MPC provides the knowledge and capability to manufacture the best solution for your equipment and identification needs.

Labels & Tags

Dependable warning labels or equipment tags with variable or constant information.

Our Metalphoto labels meet or exceed many government and industry specifications. Additional label choices include foil, polyester, polycarbonate, vinyl and magnetic; as well as custom shapes, colors, and blank laser markable labels.



Signs

Long-lasting signs for interpretive, architectural and industrial applications.

MPC offers signs capable of withstanding extreme conditions including UV and chemical exposure, extreme temperatures, and corrosive or abrasive environments. Our Sig-num sign system is preferred for plant identification.



Nameplates

Durable nameplates that stand the test of time.

Nameplates designed to promote brand recognition, display important equipment data, or relay critical safety information. Available in durable metals and plastics with high-performance adhesive and/or holes for mechanical attachment.



Panels

Rugged panels impervious to harsh environments.

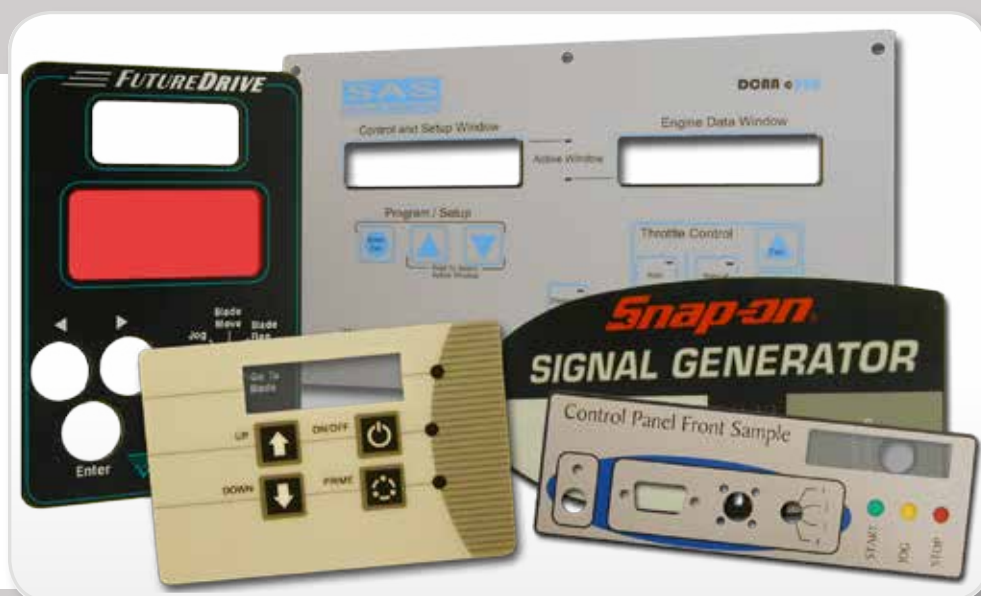
Our instrument and control panels are manufactured with a high degree of accuracy for easy integration while protecting dials, gauges and switches. Available in one-part or two-part constructions with features including studs, stand-offs, countersink or counterbore holes, and more.



Overlays

Tough overlays that last the life of your equipment.

MPC's polyester, polycarbonate and vinyl overlays are manufactured with the same high degree of accuracy as our panels. Customized features, including windows, mechanical switch openings and attachment options, allow easy integration with your equipment.



Don't see what you need? [Contact us today to discuss your project!](#)



Metalphoto of Cincinnati

Add value to your next project with MPC's identification products.

Your Material Choices Include:

Metalphoto® is our most durable and widely used material. High-resolution graphics are sealed beneath a sapphire-hard anodic layer, offering superior resistance to abrasion, cleaning solvents, most chemicals, UV and extreme temperatures. Outdoor exposure is 20+ years. The preferred choice for nameplates, panels, overlays, signs and labels.

Anodized Aluminum offers a built-in protective finish that provides exceptional abrasion resistance and durability against corrosion, extreme temperatures, chemicals and solvents. May be a great alternative to Metalphoto where UV resistance is not a requirement. Frequently used for nameplates, panels, overlays and labels.

Aluminum is lightweight and provides good corrosion resistance. Image durability is directly related to types of inks or color fills applied (epoxy, dye or pigment base). A popular choice for nameplates, panels and signs.

Stainless Steel is dense with exceptional resistance to chemicals and corrosion. A preferred substrate for highly caustic and acidic environments, which would otherwise attack aluminum. Image durability is directly related to types of inks or color fills used (epoxy, dye or pigment base). Common uses include nameplates, panels and signs.

Brass is a malleable metal with excellent resistance to saltwater, corrosion and chemicals. Image durability is directly related to types of inks or color fills applied (epoxy, dye or pigment base). A decorative yet durable choice for nameplates and signs.

Polyester offers high tensile strength with good heat, chemicals, abrasion and tear resistance. Available in a variety of colors and easily die-cut. Graphics are printed on the second surface for increased durability. Frequently used for panel overlays, labels and nameplates.

Polycarbonate offers high mechanical strength, dimensional stability, good impact resistance and superior optical clarity. Graphics are printed on the second surface for increased durability. Frequent applications include panel overlays, nameplates and labels.

Vinyl is effective and affordable. Its flexibility provides the unique ability to conform to curved and irregular surfaces. Generally used for decals and labels.

Flexible Magnetic offers the convenience to relocate again and again. Additionally, the flexibility provides the unique ability to conform to curved and irregular surfaces. Coatings for increased durability may be applied. Frequently used for mobile labels and signs.

Not sure which material to use? Call us now for help!



1080 Skillman Drive
Cincinnati, OH 45215

Toll Free: 800.528.4058
Fax: 513.772.8306

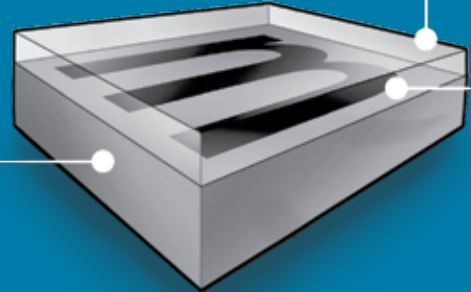
www.mpofcinci.com
cincics@mpofcinci.com



metalphoto® Cross-Section

Anodized Layer

The glass-clear, sapphire-hard anodized layer resists chemicals, paint, abrasion and dirt.



Sealed Image

The black graphics are metallic silver particles that hold up to extreme heat and sunlight exposure.

Aluminum Layer

The rigid aluminum base won't peel, crack or delaminate.

* Users must test products in the specific environment anticipated. MPC does not warrant performance of its materials in any environment.

Common uses include nameplates, panels and signs.